

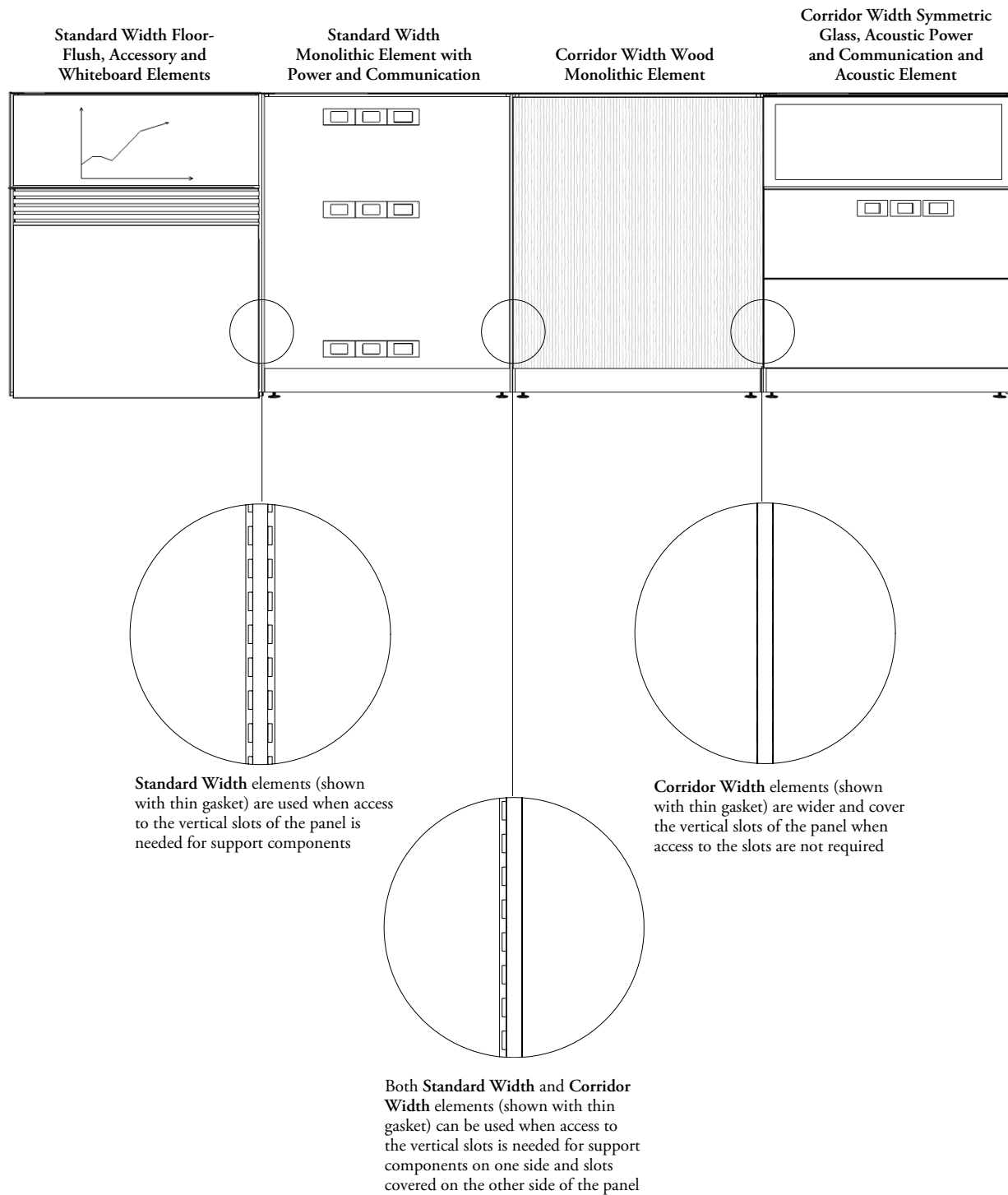
elements

ELEMENTS OVERVIEW	86
ACOUSTIC ELEMENT BASICS	87
WOOD & LAMINATE ELEMENT BASICS	88
METAL ELEMENT BASICS	89
PLANNING WITH PANEL FRAME ELEMENTS	90
PLANNING WITH PANEL FRAME ELEMENTS – ELEVATED	92
PLANNING WITH PANEL FRAME ELEMENTS – FLOOR-FLUSH	94
POWER/COMMUNICATION ELEMENT BASICS	96
MONOLITHIC POWER/COMMUNICATION ELEMENT BASICS	97
PLANNING WITH POWER/COMMUNICATION ELEMENT WIDTHS.	98
PLANNING WITH POWER/COMMUNICATION ELEMENTS	100
ACCESSORY & WHITEBOARD BASICS	112
PLANNING WITH ACCESSORY & WHITEBOARD ELEMENTS	113
GLASS ELEMENTS BASICS	114
ELEMENT/PANEL ADD-ON COMPATIBILITY CHART	115

elements overview

Leverage elements are available in Standard or Corridor widths and in a variety of finishes, to provide maximum flexibility and aesthetics.

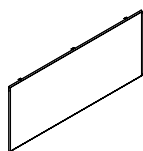
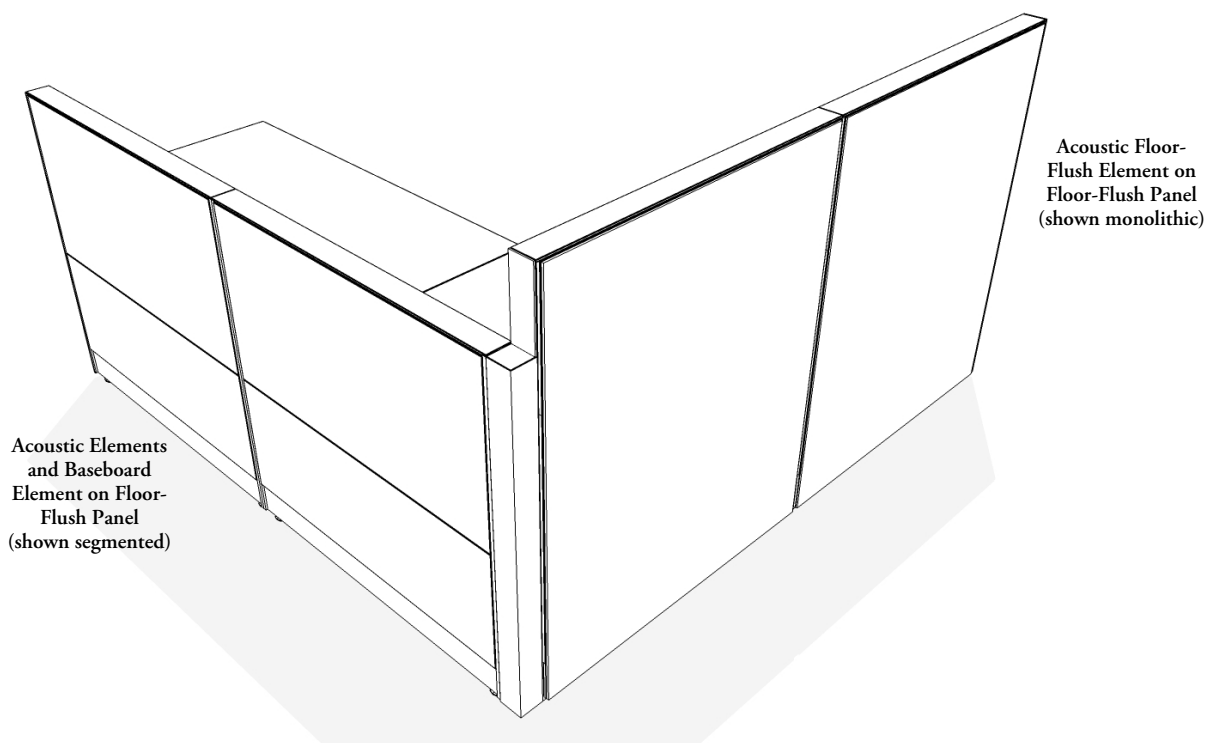
- Corridor width elements are wider and cover the vertical slots of the panel frame when using the thin gasket or with the wide gasket (reversed), for a cleaner aesthetic. However no components can be mounted to the frame



acoustic element basics

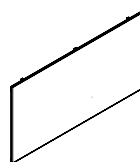
Acoustic elements are available for all panel types and provide full acoustic properties and tackability to a panel. Standard and Corridor width options are available on standard, floor-flush and monolithic elements.

Are tackable with the exception of the 6" element



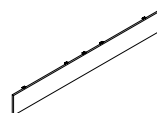
Acoustic Element (KES)

- Used on all levels of panels including the lowest level of a Floor-Flush Panel. When used with a Floor-Flush Panel and additional baseboard is required and must be ordered separately
- Available in 6", 9", 12", 15", 21", 24", 30", 36", 45" heights to match segmentation options on panels and in widths from 24" to 60"
- 36" and 45" monolithic heights are only available up to 48" wide
- Can be upholstered in materials available from *Teknion's Fabric & Finishes Program Guide*



Acoustic Element - Floor-Flush (KESF)

- Used in the lowest level of the Floor-Flush Panel only and extend to the floor, covering the base of the panel frame
- Available in 20", 29", 35", 41" heights and in widths from 24" to 48"

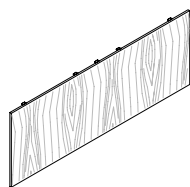
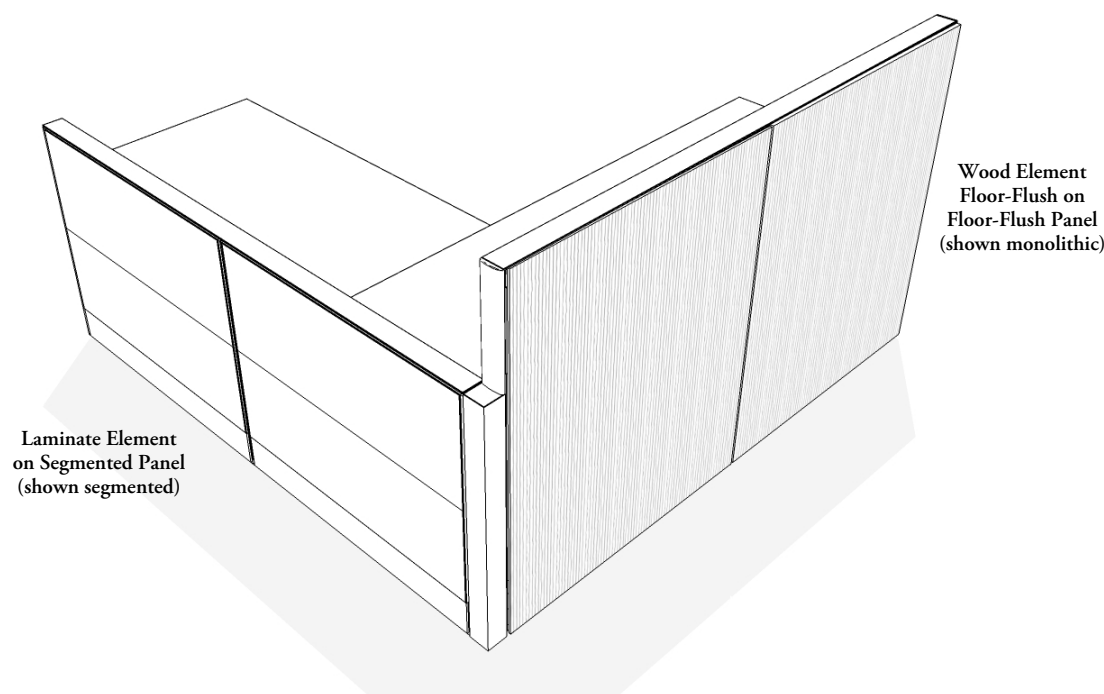


Baseboard Element (KEB)

- Used to cover the 6" base on the Floor-Flush when a Floor-Flush element is not being used
- Available in fabric, laminate, metal and wood finishes

wood & laminate element basics

Wood and Laminate elements are available for all panel types and provide a hard surface finish to a panel. Standard and Corridor width options are available on standard, floor-flush and monolithic elements.

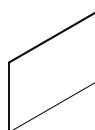


Wood Element (KEWD)

- Used on all levels of panels including the lowest level of a Floor-Flush Panel. When used with a Floor-Flush Panel and additional baseboard is required and must be ordered separately
- Available in 6", 9", 12", 15", 21", 24", 30", 36", 45" heights to match segmentation options on panels and in widths from 24" to 48"
- Available in Flintwood finishes
- Grain direction on wood elements run vertically

Wood Element Floor-Flush (KEWF)

- Used in the lowest level of the Floor-Flush Panel, covering the base of the panel frame
- Available in 20", 29", 35", 41", 50" heights and in widths from 24" to 48"
- Available in Flintwood finishes
- Grain direction on wood elements run vertically



Laminate Element (KEA)

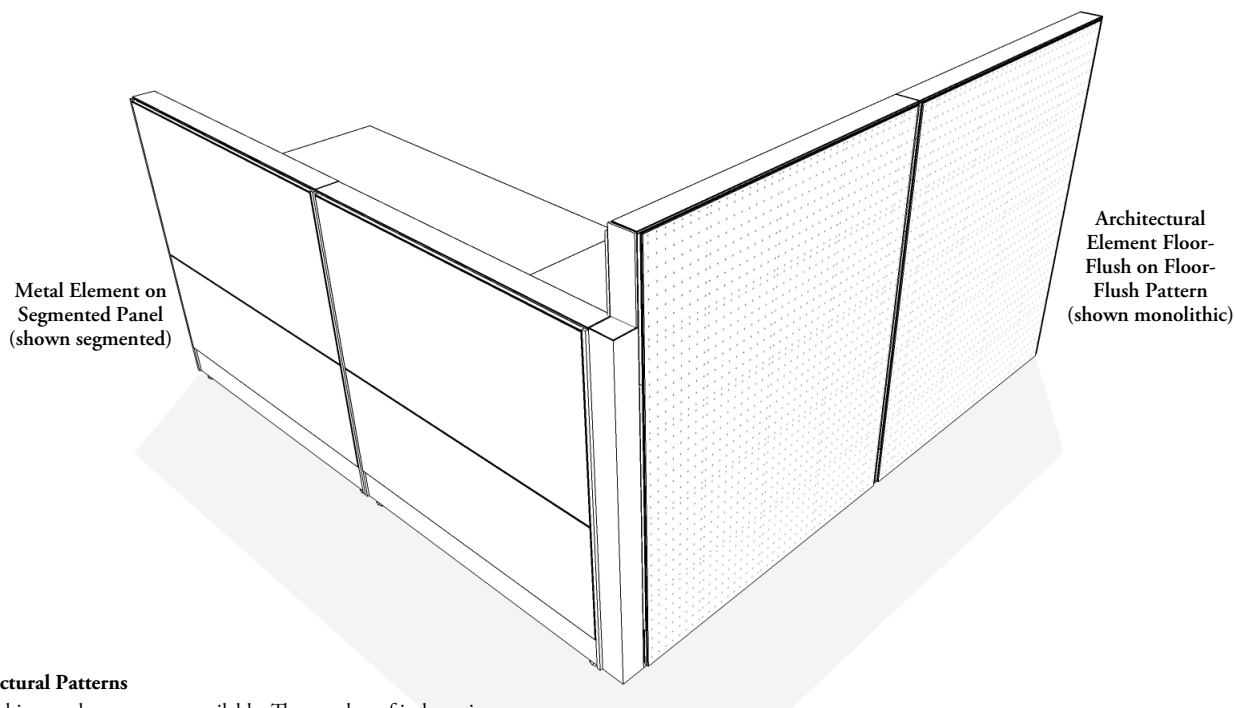
- Used on all levels of panels including the lowest level of a Floor-Flush Panel. When used with a Floor-Flush Panel and additional baseboard is required and must be ordered separately
- Available in 6", 9", 12", 15", 21", 24", 30", 36", 45", and 60" heights and widths from 24" to 48"
- Available in Element Source Laminate

Laminate Element Floor-Flush (KEAF)

- Used in the lowest level of the Floor-Flush Panel, covering the base of the panel frame
- Available in 20", 29", 35", 41" and 50" heights and widths from 24" to 48"
- Available in Element Source Laminate

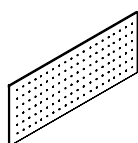
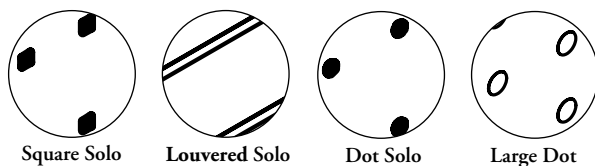
metal element basics

Metal elements are available for all panel types and with architectural patterns provide a para-magnetic alternative to fabric elements. Standard and Corridor width options are available on standard, floor-flush and monolithic elements.



Architectural Patterns

Four architectural patterns are available. The number of indentations used to make up a pattern will vary depending on element height

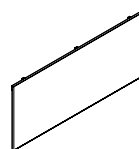


Architectural Element (KER)

- Provides an embossed surface in various patterns and are used on all levels of panels including the lowest level of a Floor-Flush Panel. When used with a Floor-Flush Panel and additional baseboard is required and must be ordered separately
- Available in 6", 12", 15", 21", 24", 30", 36", and 45" heights and widths from 24" to 60"
- Available in Foundation, Mica and Accent

Metal Element Floor-Flush (KEMF)

- Used in the lowest level of the Floor-Flush Panel, covering the base of the panel frame
- Available in 20", 29", 35", 41" and 50" heights and 24" to 60" widths
- Available in Foundation, Mica and Accent



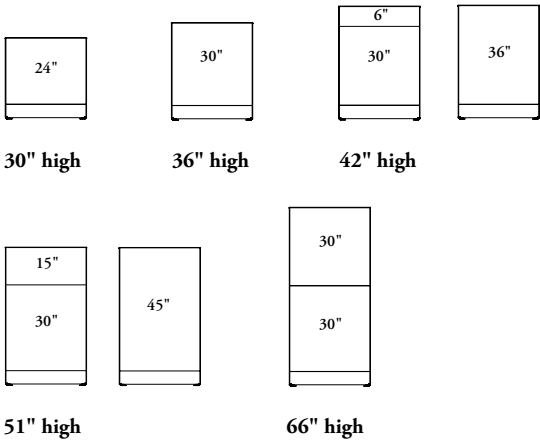
Metal Element (KEM)

- Used on all levels of panels including the lowest level of a Floor-Flush Panel. When used with a Floor-Flush Panel and additional baseboard is required and must be ordered separately
- Available in 6", 9", 12", 15", 21", 24", 30", 36", and 45" heights and widths from 24" to 60"
- Available in Foundation, Mica and Accent

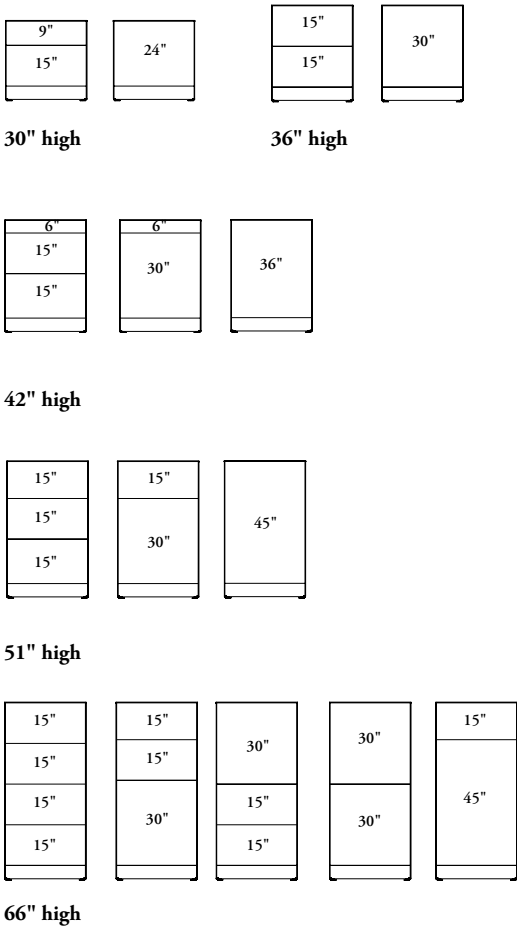
planning with panel frame elements – conventional and universal

Acoustic, Metal, Wood and Baseboard elements can be used on Leverage Conventional and Universal Panels. The following outlines all of the locations that they can be used.

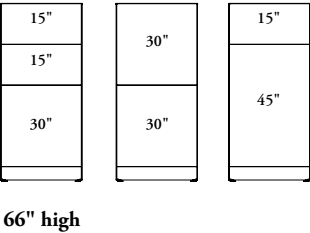
standard



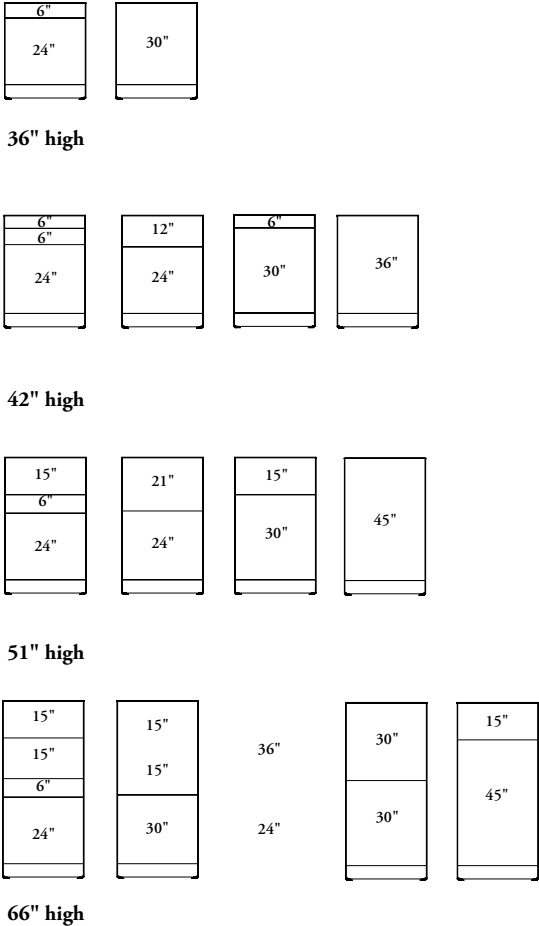
segmented



semi-segmented

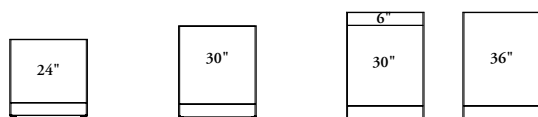


segmented with 30" rail



planning with panel frame elements – conventional and universal (continued)

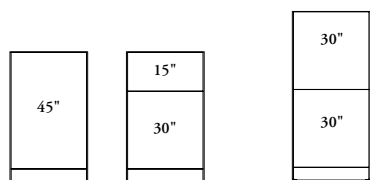
standard



30" high

36" high

42" high



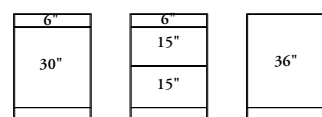
51" high

66" high

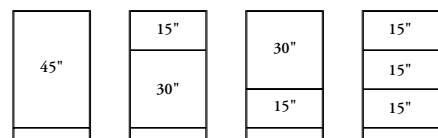
segmented



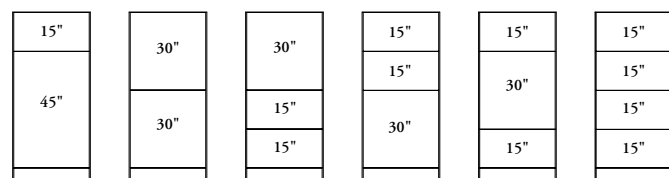
36" high



42" high

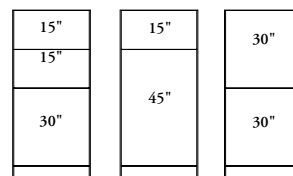


51" high



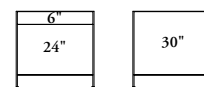
66" high

semi-segmented

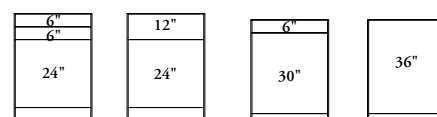


66" high

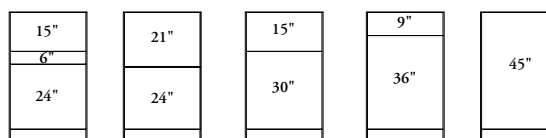
segmented with 30" rail



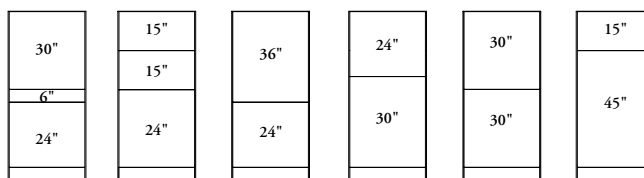
36" high



42" high



51" high

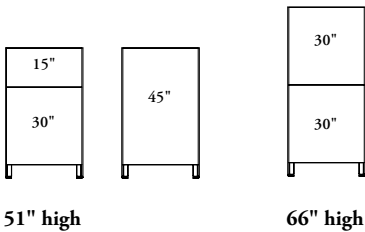
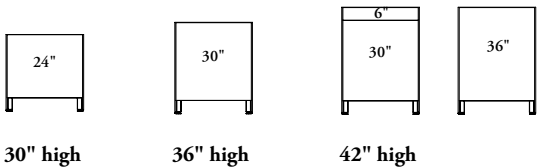


66" high

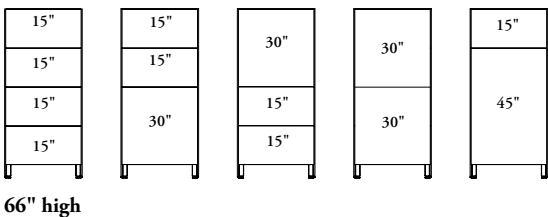
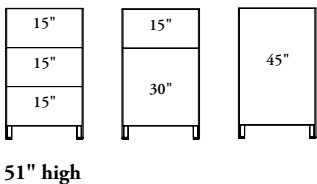
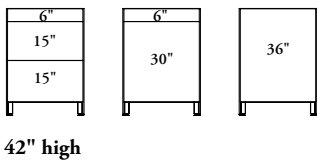
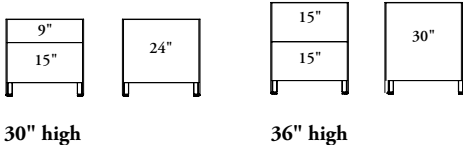
planning with panel frame elements – elevated

Acoustic, Metal, Wood and Baseboard elements can be used on Leverage Elevated Panels. The following outlines all of the locations that they can be used.

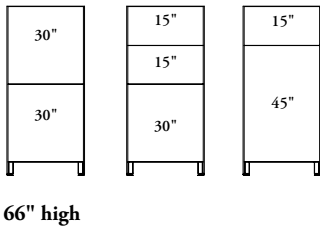
standard



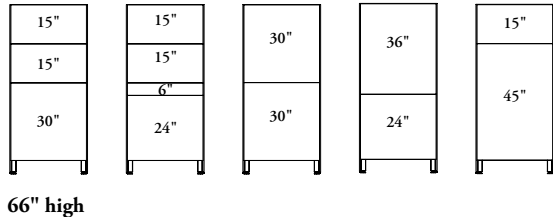
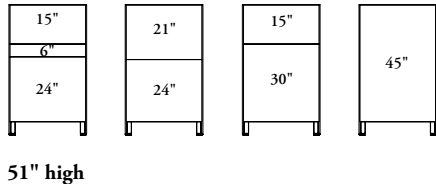
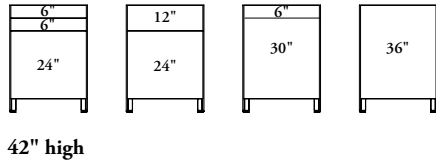
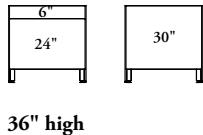
segmented



semi-segmented



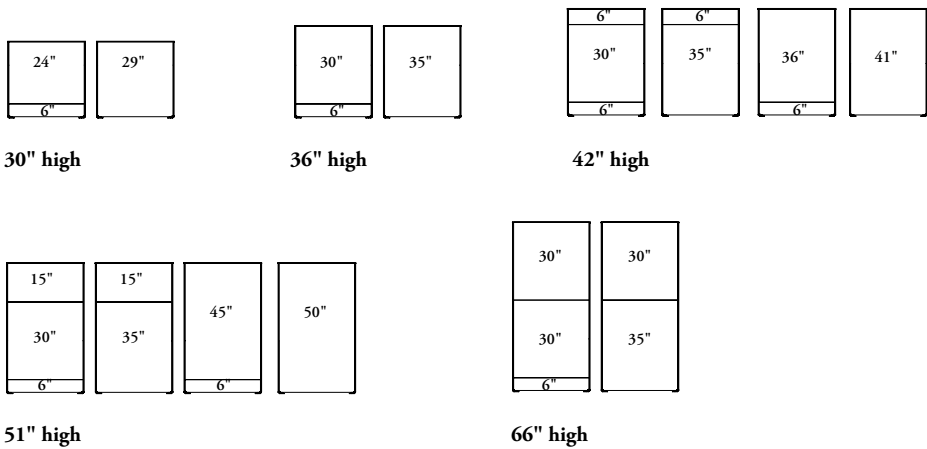
segmented with 30 inch rail



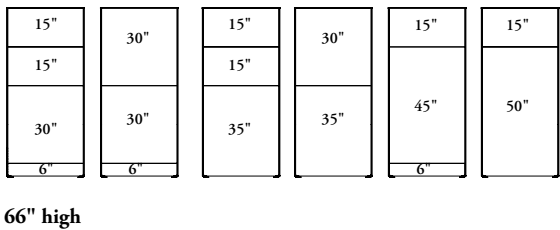
planning with panel frame elements – floor-flush

Acoustic, Metal, Wood and Baseboard elements can be used on Leverage Floor-Flush Panels. The following outlines all of the locations that they can be used.

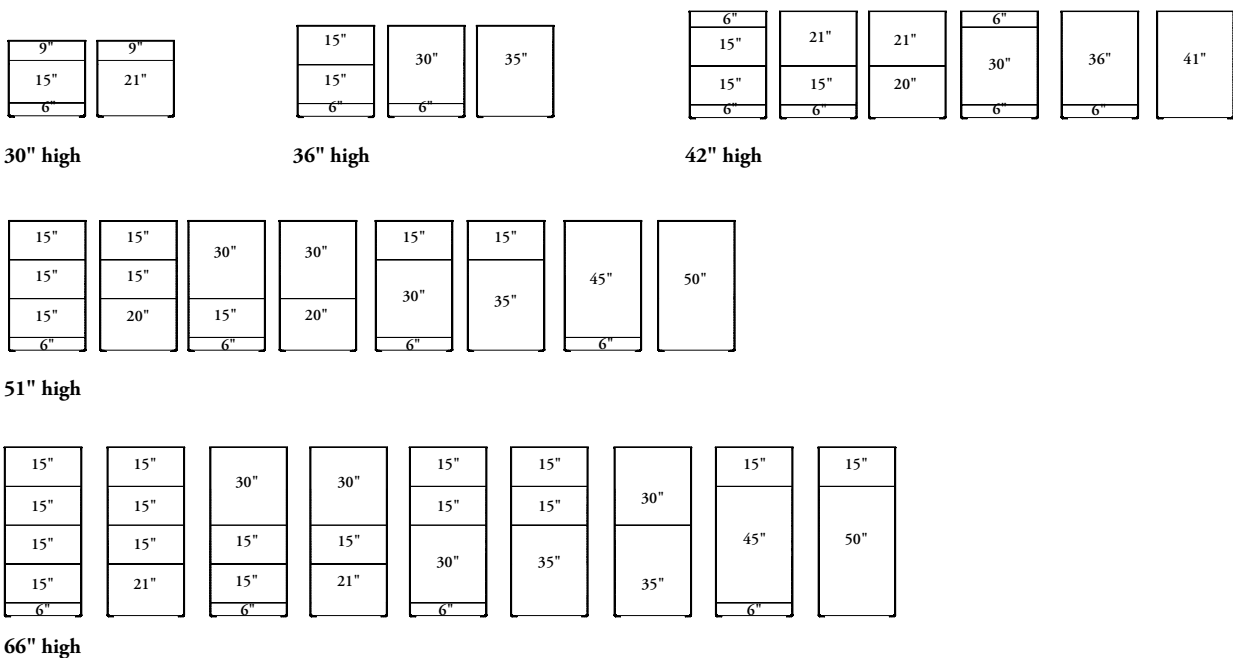
standard



semi-segmented



segmented



planning with panel frame elements – floor-flush (continued)

segmented with 30" rail

6"	6"		
24"	29"	30"	35"

36" high

6"	6"	12"	12"	6"	6"		
6"	6"						
24"	29"	24"	29"	30"	35"	36"	41"

42" high

15"	15"	21"	21"	15"	15"		
6"	6"						
24"	29"	24"	29"	30"	35"	45"	50"

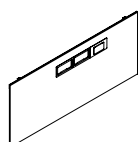
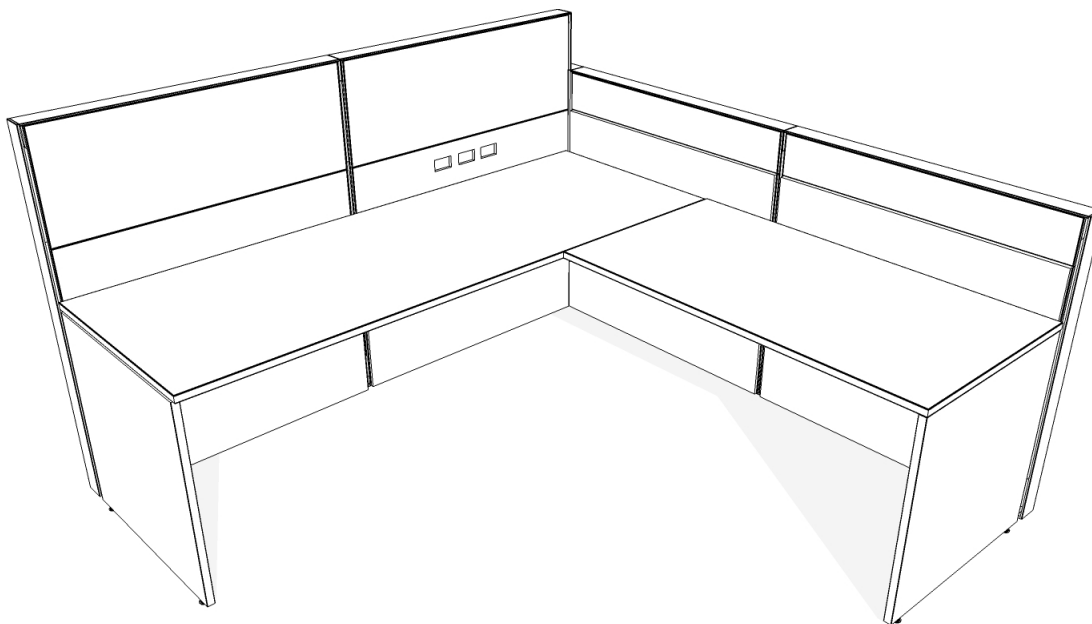
51" high

15"	15"	30"	30"	36"	36"	15"	30"	15"	
15"	15"					15"			
6"	6"	6"	6"						
24"	29"	24"	29"	24"	29"	35"	35"	50"	60"

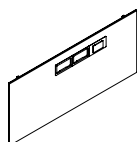
66" high

power/communication element basics

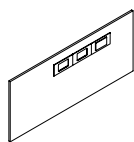
Power and Communication elements are available for all panel types and provide face-mounted access to power and communication outlets and are available in Corridor and Standard width. They are available in fabric, metal, wood and laminate finishes.



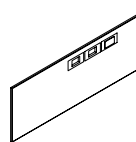
**Acoustic Power/
Communication
Element (KEC)**



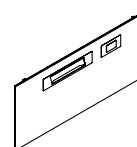
**Metal Power/
Communication
Element (KEMD)**



**Laminate Element
Power/Communication
(KEAP)**



**Metal Power/
Communication Element-
Floor-Flush (KEMDF)**



**International Power/
Communications Element (VKEC)**

Power/Communication Elements

Provides face-mounted access to power and communications outlets available Standard and Corridor Width

Heights:

Standard Heights:

9", 12", 15", 21", 24", 30" and 36"h to match segmentation options on panels

Floor Flush Heights:

20", 29", 35", 41" and 51"h. all allow the fascia to cover the base of a Floor-Flush Panel

24" and 30"h. elements are shipped with the cut outs at the top of the element but can be rotated on site to allow for base access to power on 30"h. panels, the electrical cut out at the top of the element allows for access from below a worksurface

Widths:

All panel types except Floor Flush

24" to 60"w.

Floor Flush

24" to 48"w.

Cut Out Locations:

- 1 -Power Only
- 2 -Power and Communication
- 3- Communication Only
- 4 - CALA Power and Communication 2 Outlets
- 5 - CALA Power and Communication 4 Outlets

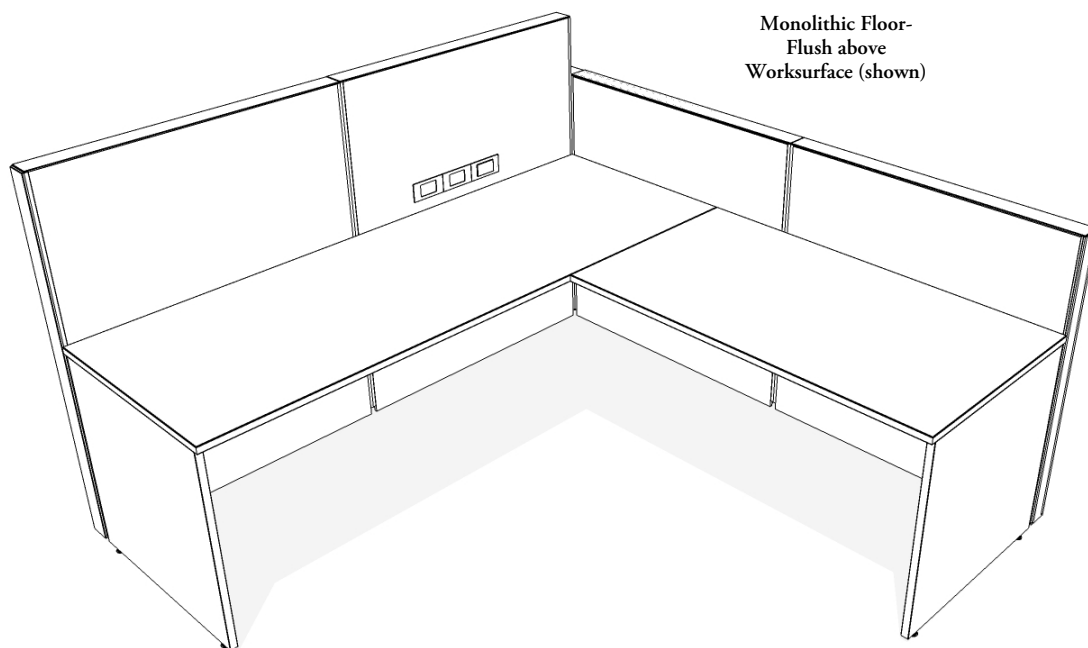
Finishes:

- Acoustic Fabrics
- Materials available from *Teknion's Fabric & Finish Program Guide*
- Metal
- Foundation
- Mica
- Flintwood
- Flintwood Stains
- Laminate
- Source Laminate

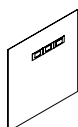
- Similar to Acoustic Power/Communication Element (KEC), but for International applications
- Used with (VED) outlet boxes which are available in 2 power or 4 power configurations
- Can be upholstered in materials available from *Teknion's Fabric & Finishes Program Guide*
- International Power/Communications Element (VKEC) is sized to standard industry faceplates and is not sized for the Voice & Data Box (VVD)

monolithic power/communication element basics

Monolithic Power and Communication elements are available for all panel types and provide face-mounted access to power and communication outlets on a monolithic element and are available in Corridor and Standard width, floor-flush and monolithic. They are available in fabric, metal and wood finishes.



Monolithic Floor-
Flush above
Worksurface (shown)



Monolithic Acoustic Power/
Communication Element
(KEUS)

Monolithic Power/Communication Elements

Provide face-mounted access to power and communications outlets on a monolithic element available standard and corridor width monolithic elements **cannot** be rotated on a panel

Cut Out Locations:

Top
Above worksurface
Below worksurface
Base (not available on Elevated Panels)

Heights:

36" and 45"h.

Widths:

24" to 48"w.

Cut Out Locations

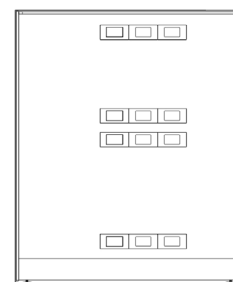
1 -Power Only
2 -Power and Communication

3- Communication Only
4 - CALA Power and Communication 2 Outlets
5 - CALA Power and Communication 4 Outlets

Finishes:

Acoustic Fabrics materials available from
Teknion's Fabric & Finish Program Guide

Metal
Foundation
Mica
Flintwood
Flintwood Stains
Laminate
Source Laminate



Power Cut Outs are available in four locations:

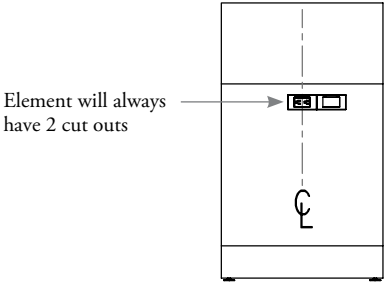
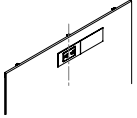
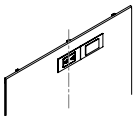
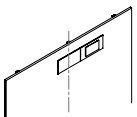
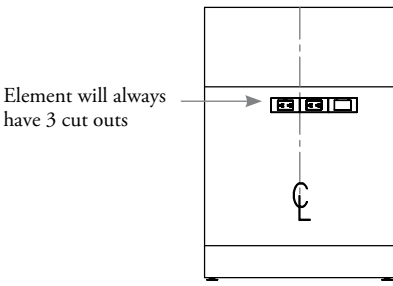
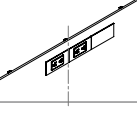
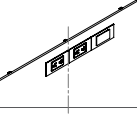
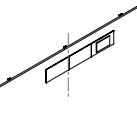
- **Top** (available on Floor-Flush panels and on a 36" monolithic element)
- **Above worksurface** (available on all panel types)
- **Under worksurface** (available on all panel types with a 30" rail)
- **Base** (available on all panel types excluding elevated)

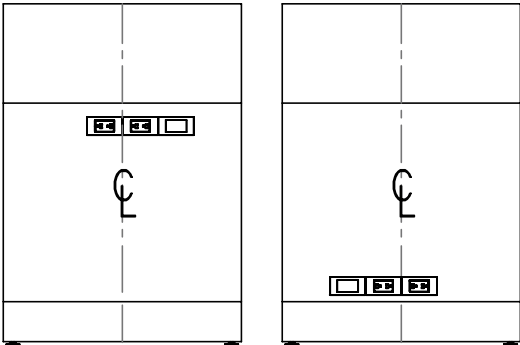
planning with power/communication element widths

The following should be considered when planning with Power/Communication element widths

- The location of the power or communication cut out is always centered on the element, and the bezel with cover plate is always to the right

standard elements

panel width	options	location
Panel width of 24" or 30" 	Power only: 1 power bezel 1 communication bezel with a cap	 Power bezel is centered Communication on right
	Power/Communication: 1 power bezel 1 communication bezel with a cover plate	 Power bezel is centered Communication on right
	Communication only: 1 communication bezel 1 communication bezel with cover plate, 1 cut out with a cap	 Communication bezel plate is centered Communication on right
Panel width of 36" and more 	Power only: 2 power bezels 1 cut out with a cap	 Power bezels are centered Communication on right
	Power/Communication: 2 power bezels 1 communication bezel	 Power bezels are centered Communication on right
	Communication only: 1 communication bezel with cover plates 2 cut outs with a cap	 Power cover plates are centered Communication on right

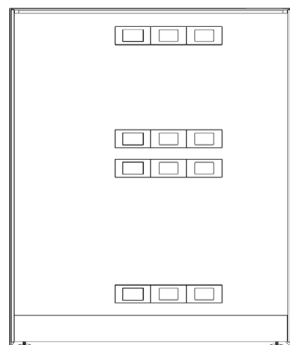


Elements up to 30"h. can be rotated, providing the versatility to have the power on the top or bottom of an element.
-The communication cut out will be on the left when the element is rotated
-Careful attention is required when selecting patterned fabrics as they will appear differently when rotated

planning with power/communication element width (continued)

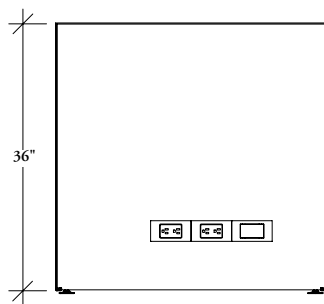
monolithic elements

On monolithic elements, power and communication cut outs are available in four locations

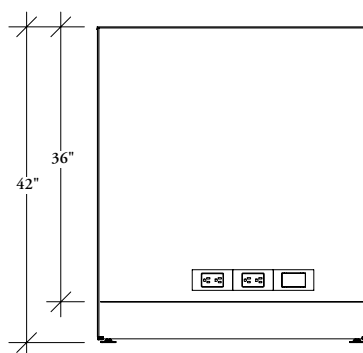


- **Top** (available on Floor-Flush panels and on a 36" monolithic element)
- **Above worksurface** (available on all panel types)
- **Under worksurface** (available on all panel types with a 30" rail)
- **Base** (available on all panel types excluding elevated)

Although Power and Communications Elements may share similar heights, they have different functions. Careful attention is required when selecting the correct element.



- 35" high Metal Power/Communication Element - Floor Flush (KEMDF) used on 36" high Floor-Flush Panel



- 36" high Metal Power/Communication Element (KEMD) used on a 42" high Conventional Panel
- Offers the ability to rotate the element so the power can be at the top or bottom
- Can be located on a different level of the panel of desired (from 30" - 66")

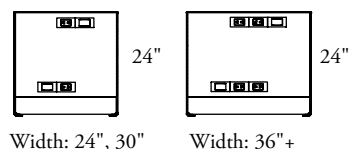
planning with power/communication elements – conventional

The following pages outline the available locations for power/communication elements.

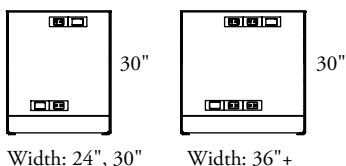
- Power Communication Elements can be used on Leverage Conventional and Universal Panels. The following outlines all of the possible locations that they can be used. (cut outs **cannot** be in two locations on the same element)

standard (KPWT)

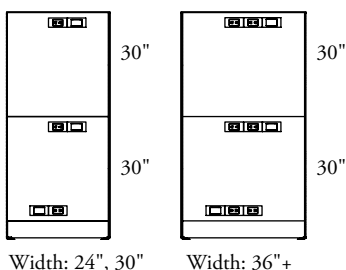
30" high



36" high

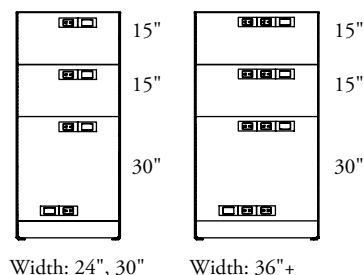


42" - 66" high



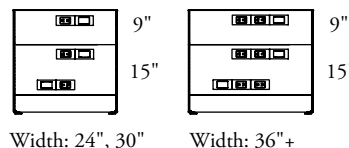
semi-segmented panel (KPWS)

66" high

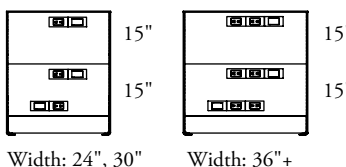


segmented panel (KPWC)

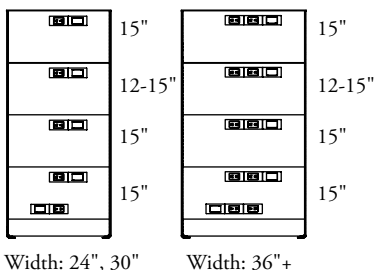
30" high



36" high

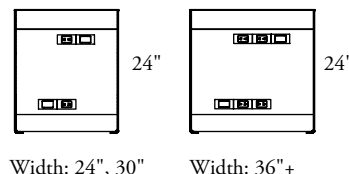


42" - 66" high

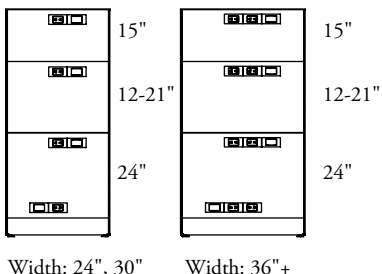


segmented panel - 30" rail (KPWL)

36" high



42" - 66" high

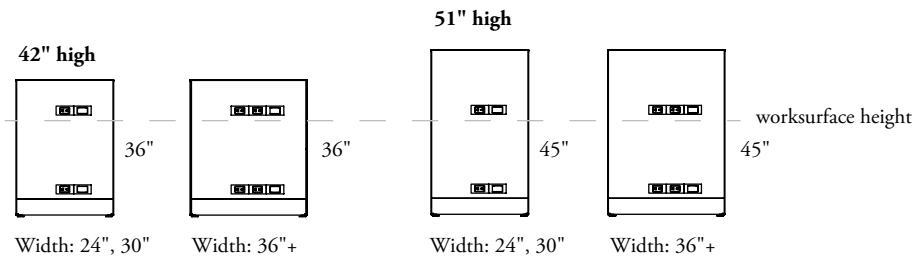


planning with monolithic power/communication elements – conventional

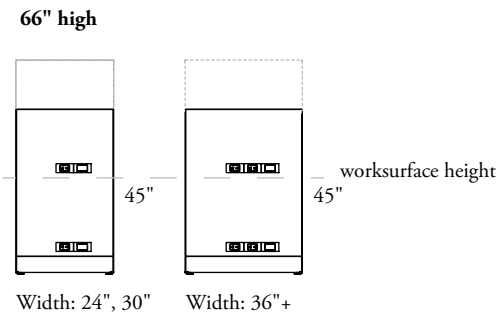
The following pages outline the available locations for power/communication elements.

- Conventional panels can accept power/communication cut outs at base level, top on 36" high Monolithic Panels and below worksurface on Segmented Panels with 30" Rail

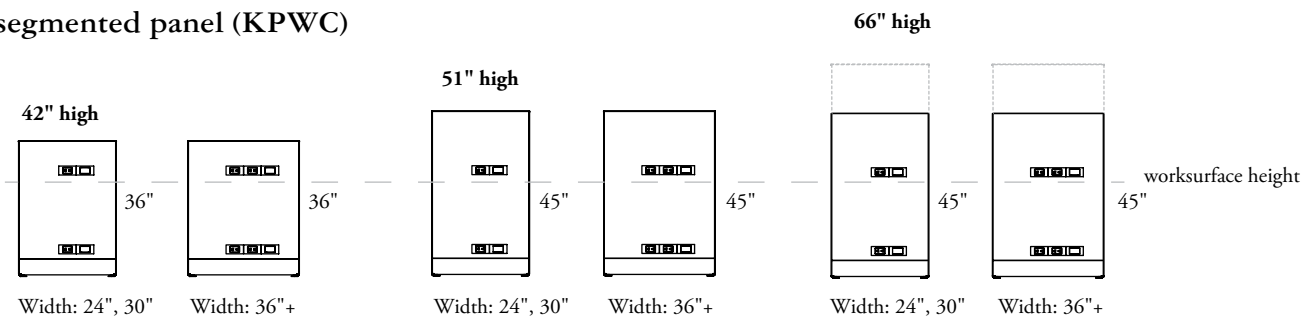
standard (KPWT)



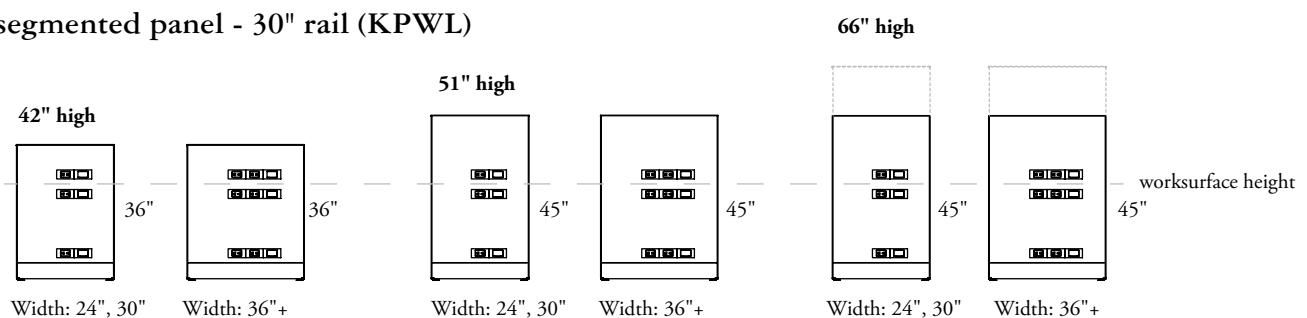
semi-segmented panel (KPWS)



segmented panel (KPWC)



segmented panel - 30" rail (KPWL)

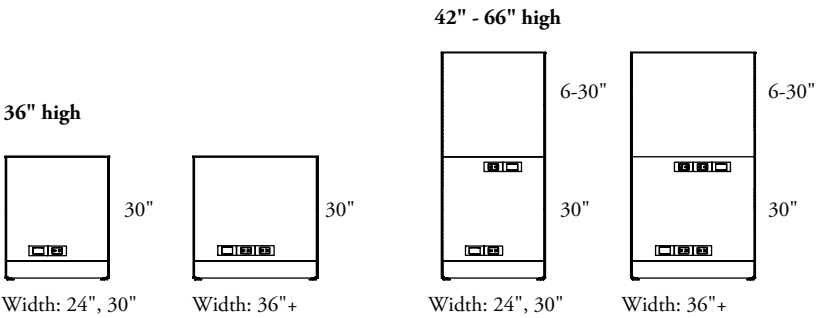


planning with power/communication elements – universal

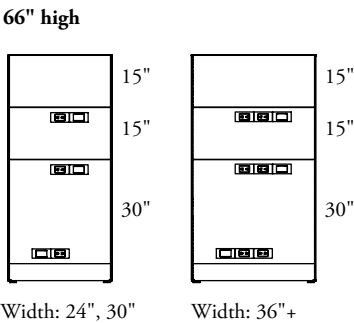
The following pages outline the available locations for power/communication elements.

- Power and Communications **cannot** be installed under the top rail of a panel with the deep cable lay-in trough

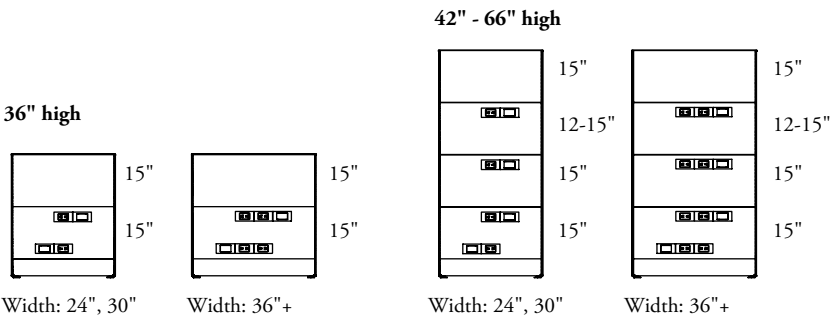
standard (KPUT)



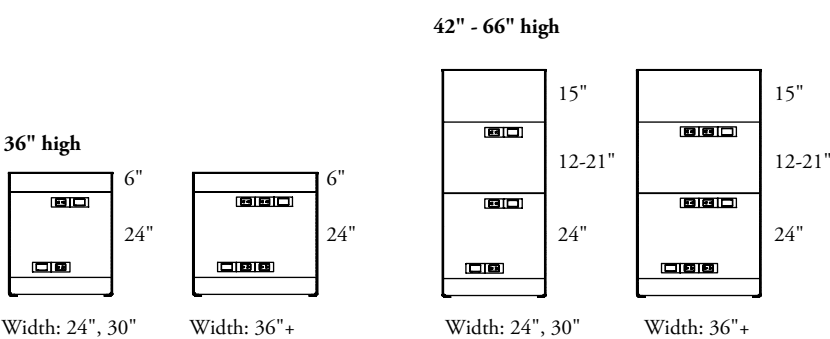
semi-segmented panel (KPUS)



segmented panel (KPUC)



segmented panel - 30" rail (KPUL)

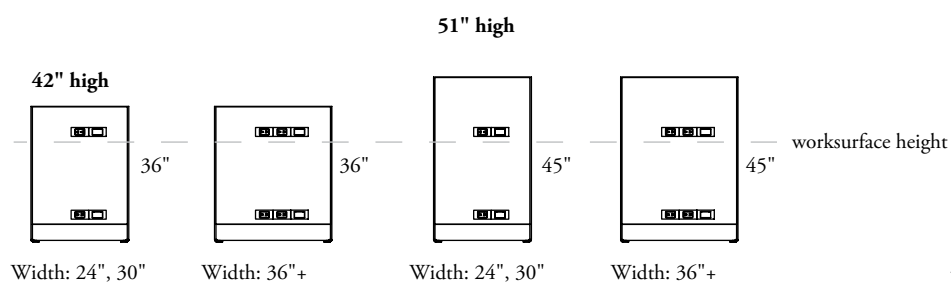


planning with monolithic power/communication elements – universal

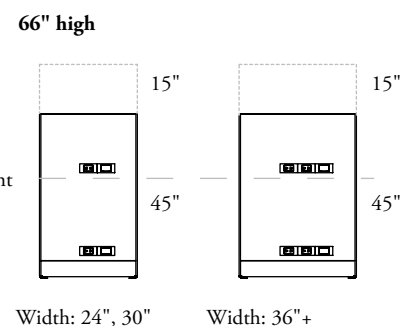
The following pages outline the available locations for power/communication elements.

- Universal panels can accept power/communication cut outs at base level, above worksurface level and below worksurface level on Segmented Panels with 30" Rail

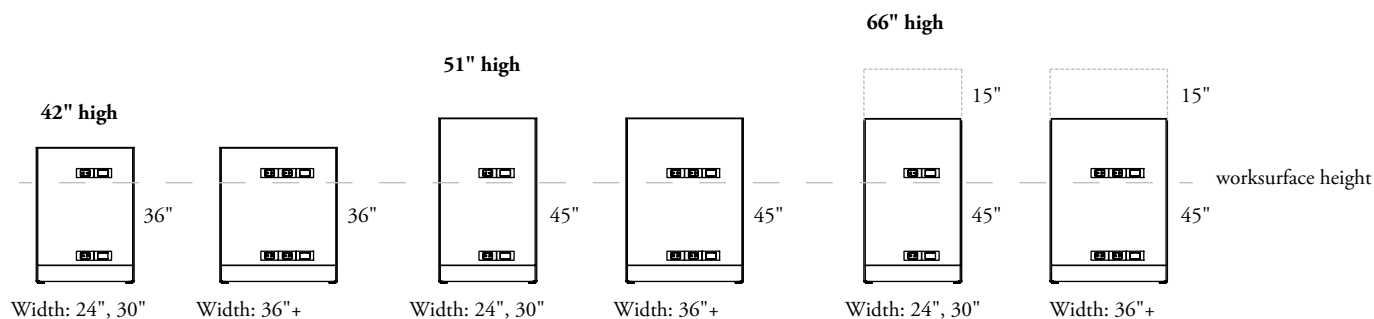
standard (KPUT)



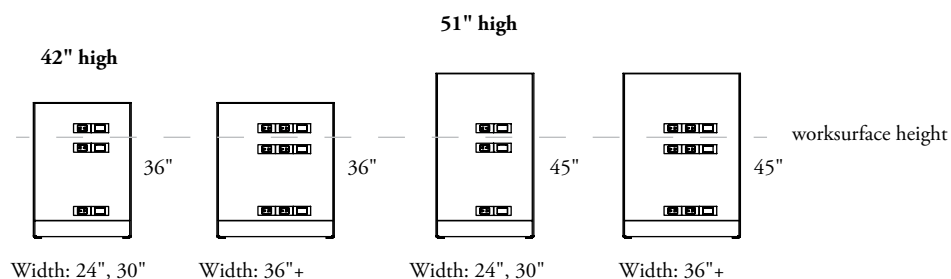
semi-segmented panel (KPUS)



segmented panel (KPUC)



segmented panel - 30" rail (KPUL)

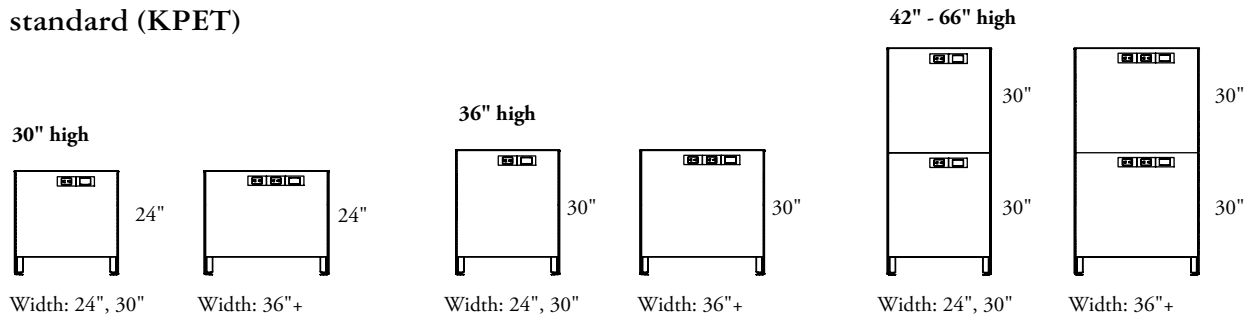


planning with power/communication elements – elevated

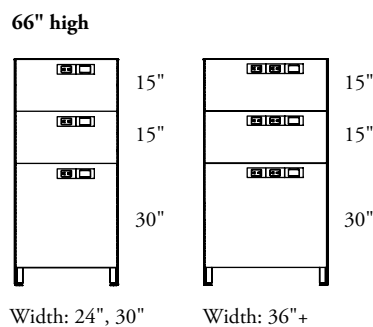
The following pages outline the available locations for power/communication elements.

- Standard (non monolithic elements) used in the lowest level **cannot** be rotated so that the power can be at the top or bottom of the element. There is no power at the base height
- When the power communication element is mounted with the cut outs at the top of the element the power cut outs are centered and the communications cut out is to the right of the power cut outs

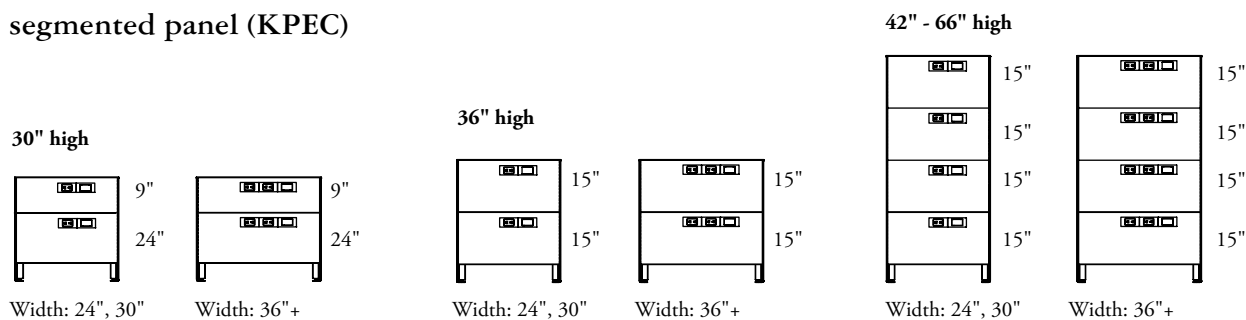
standard (KPET)



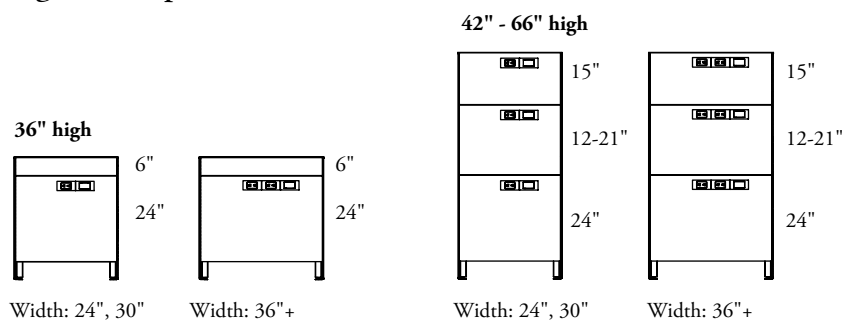
semi-segmented panel (KPES)



segmented panel (KPEC)



segmented panel - 30" rail (KPEL)

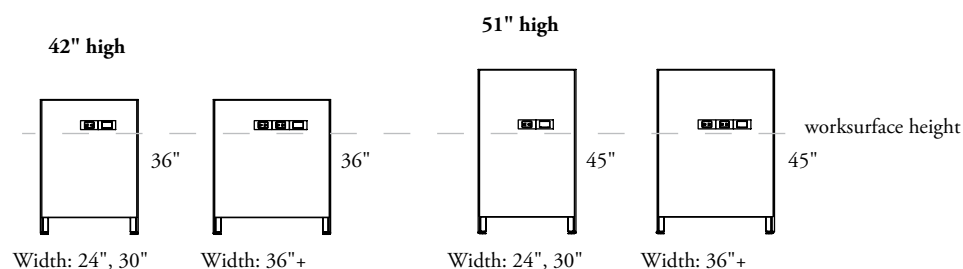


planning with monolithic power/communication elements – elevated

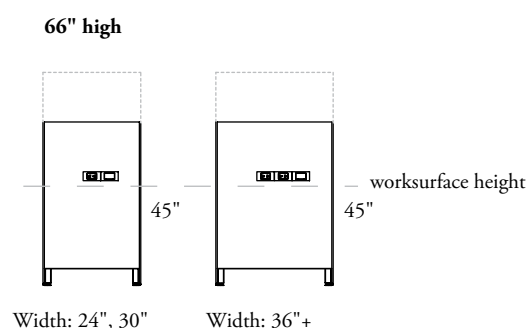
The following pages outline the available locations for power/communication elements.

- Elevated panels can accept power at top of power/communication cut outs up to 36" high, above worksurface level and below worksurface level on Segmented Panels with 30" Rail

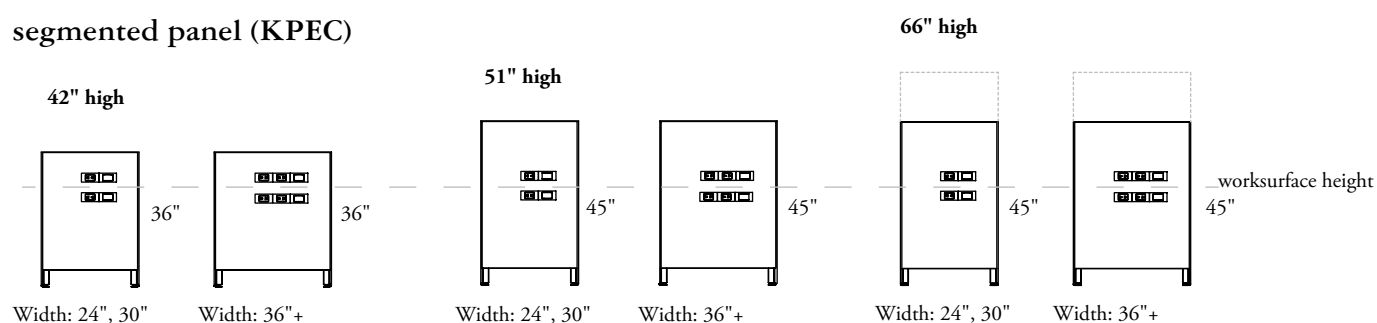
standard (KPET)



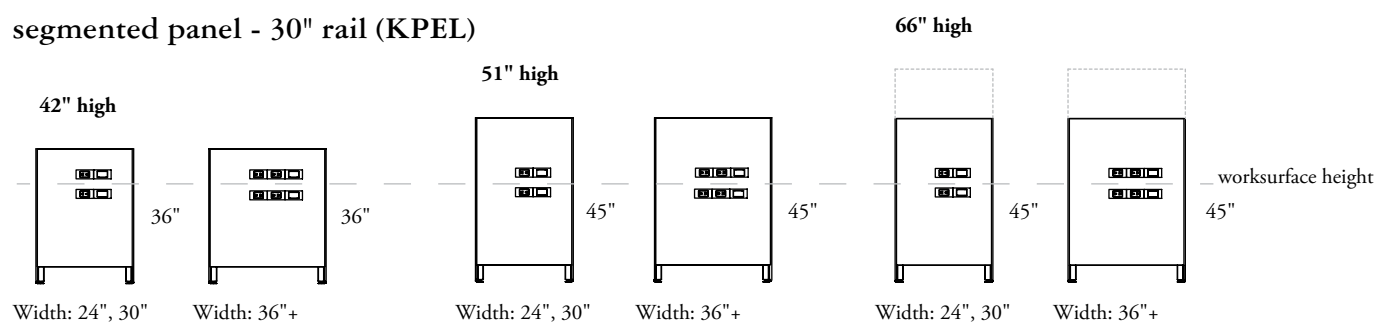
semi-segmented panel (KPES)



segmented panel (KPEC)



segmented panel - 30" rail (KPEL)



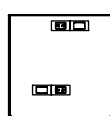
planning with power/communication elements – floor-flush

The following pages outline the available locations for power/communication elements.

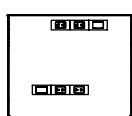
- Power and communications **cannot** be mounted below the lowest rail and above the base in the same panel, it must be one or the other only
- Power and communication elements **cannot** extend to the floor, they extend only to the base and a separate baseboard element must be specified, if no cut outs are required on the backside of the panel, the element on the backside can extend to the floor

standard (KPXT)

30" high

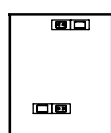


Width: 24", 30"

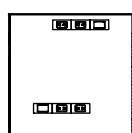


Width: 36"+

36" high

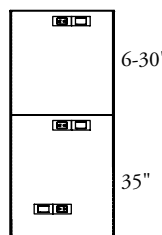


Width: 24", 30"

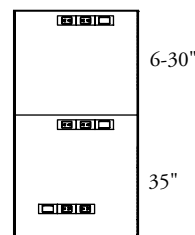


Width: 36"+

42" - 66" high



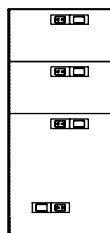
Width: 24", 30"



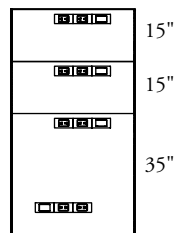
Width: 36"+

semi-segmented panel (KPXS)

66" high



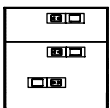
Width: 24", 30"



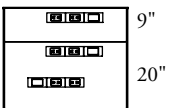
Width: 36"+

segmented panel (KPXC)

30" high

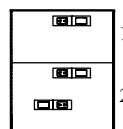


Width: 24", 30"

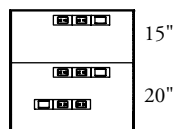


Width: 36"+

36" high

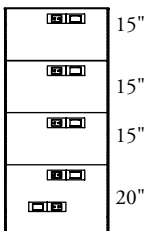


Width: 24", 30"

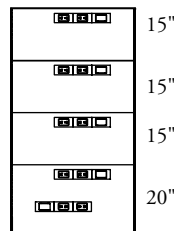


Width: 36"+

42" - 66" high



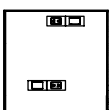
Width: 24", 30"



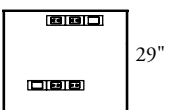
Width: 36"+

segmented panel - 30" rail (KPXL)

30" high

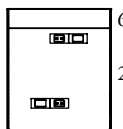


Width: 24", 30"

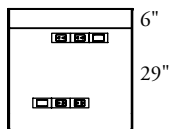


Width: 36"+

36" high

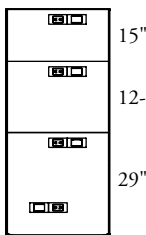


Width: 24", 30"

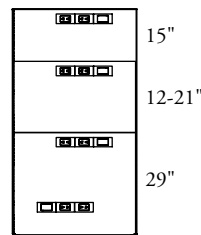


Width: 36"+

42" - 66" high



Width: 24", 30"



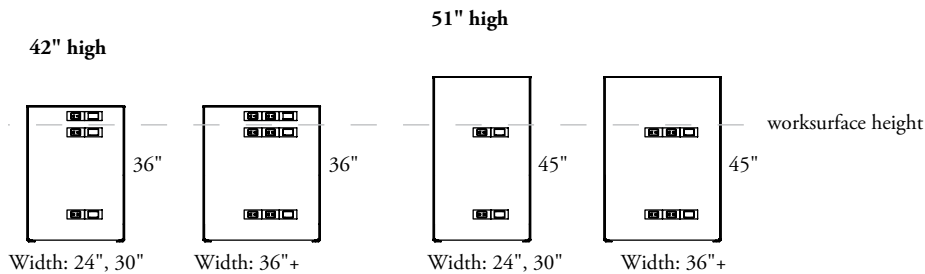
Width: 36"+

planning with monolithic power/communication elements – floor-flush

The following pages outline the available locations for power/communication elements.

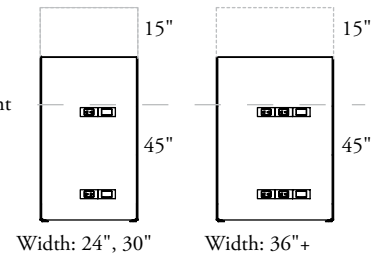
- Floor-Flush panels can accept power/communication cut outs at base level, top of elements up to 36" high, above worksurface level and below worksurface level on Segmented Panels with 30" Rail
- Power and communication elements **cannot** extend to the floor, they extend only to the base and a separate baseboard element must be specified, if no cut outs are required on the backside of the panel, the element on the backside can extend to the floor

standard (KPXT)

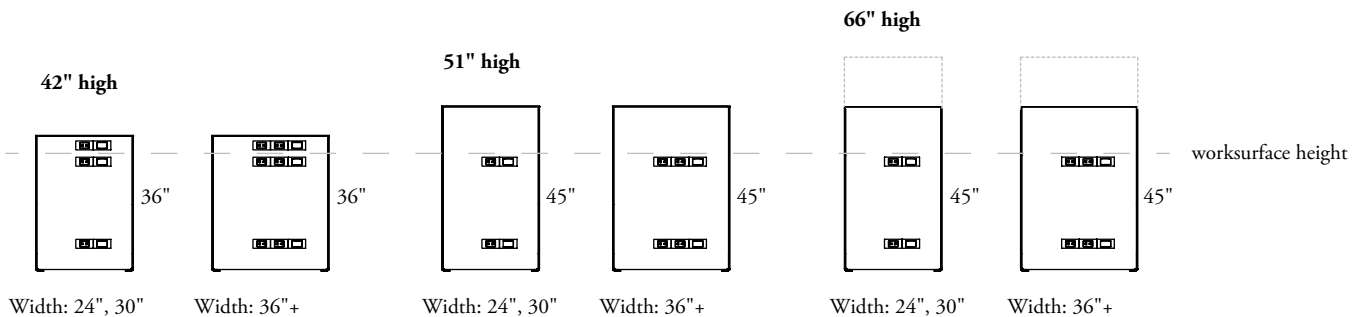


semi-segmented panel (KPXS)

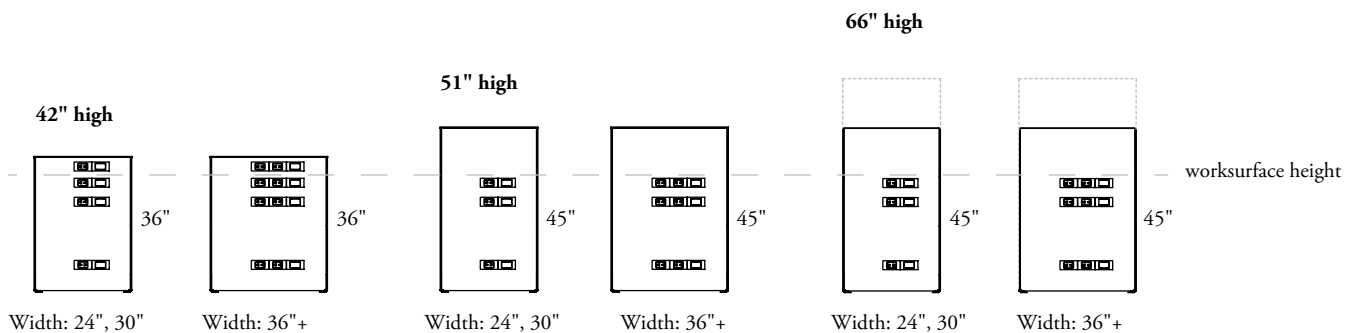
66" high



segmented panel (KPXC)



segmented panel - 30" rail (KPXL)



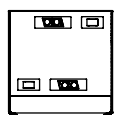
planning with power/communication elements – international conventional

The Conventional Panel frame allows outlets to be mounted below all rails including the top rail, and above the bottom rail. The following outlines all location possibilities.

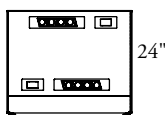
- When the power communication element is mounted with the cut outs at the top of the element the power cut outs are centered and the communications cut out is to the right of the power cut outs
- When the element is rotated to allow the cut outs to be above the base rail, the communications cut out will be to the left of the power cut outs

standard (KPWT)

30" high

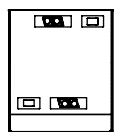


Width: 24", 30"

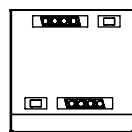


Width: 36"+

36" high

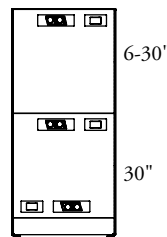


Width: 24", 30"

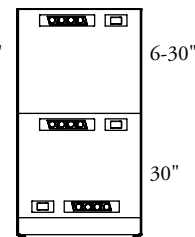


Width: 36"+

42" - 66" high



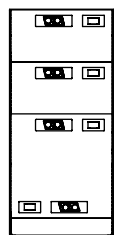
Width: 24", 30"



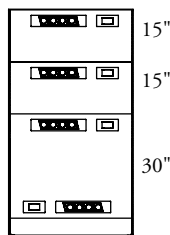
Width: 36"+

semi-segmented panel (KPWS)

66" high



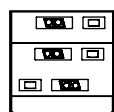
Width: 24", 30"



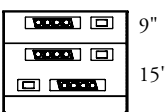
Width: 36"+

segmented panel (KPWC)

30" high

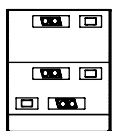


Width: 24", 30"

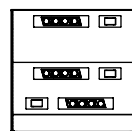


Width: 36"+

36" high

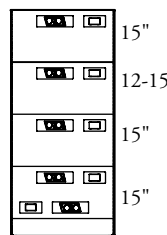


Width: 24", 30"

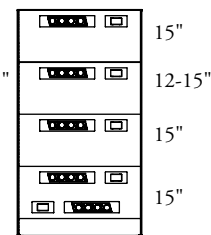


Width: 36"+

42" - 66" high



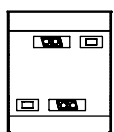
Width: 24", 30"



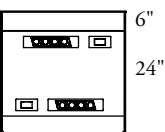
Width: 36"+

segmented panel - 30" rail (KPWL)

36" high

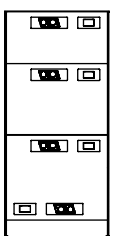


Width: 24", 30"

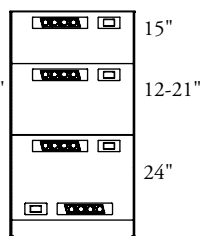


Width: 36"+

42" - 66" high



Width: 24", 30"



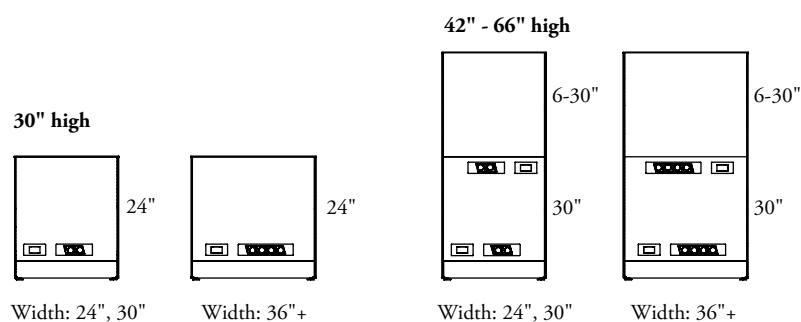
Width: 36"+

planning with power/communication elements – international universal

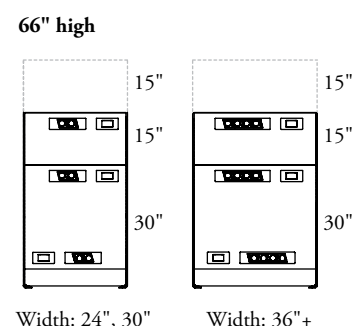
The Universal Panel frame allows outlets to be mounted below all rails except the top rail, and above the bottom rail. The following outlines all location possibilities.

- When the power communication element is mounted with the cut outs at the top of the element the power cut outs are centered and the communications cut out is to the right of the power cut outs
- When the element is rotated to allow the cut outs to be above the base rail, the communications cut out will be to the left of the power cut outs

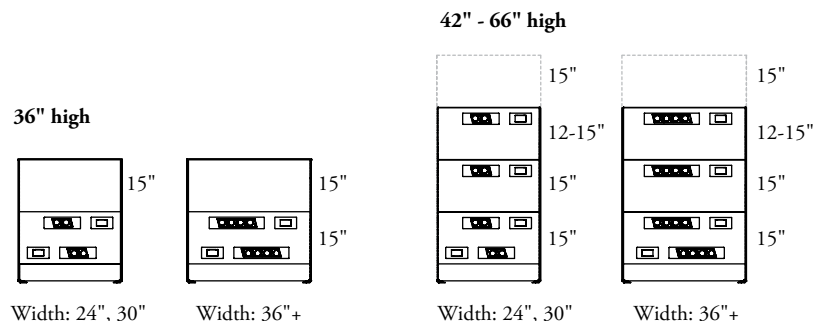
standard (KPUT)



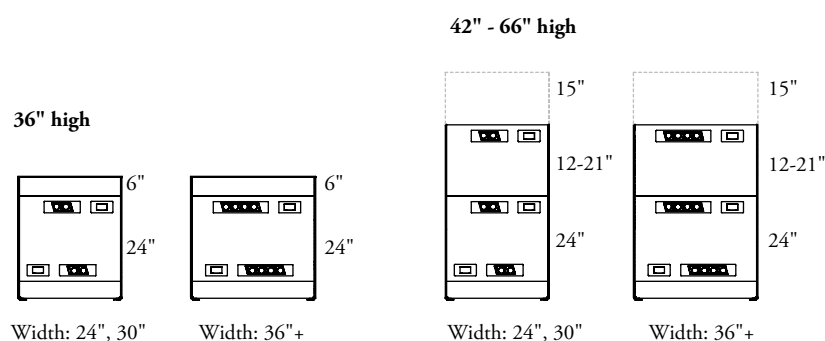
semi-segmented panel (KPUS)



segmented panel (KPUC)



segmented panel - 30" rail (KPUL)

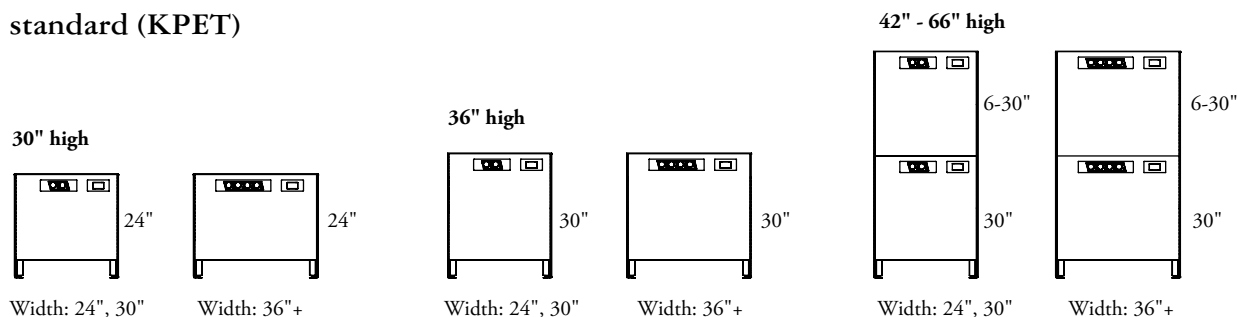


planning with power/communication elements – international elevated

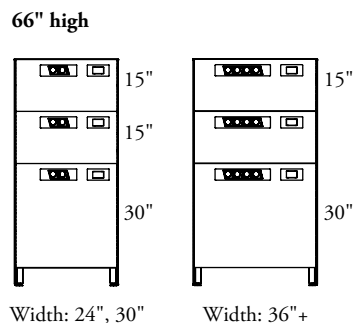
The Elevated Panel frame allows outlets to be mounted below all rails including the top rail. The following outlines all location possibilities.

- The power communication element must be mounted with the cut outs at the top of the element (there is no option for mounting the outlets above the base rail on an elevated panel)
- The power cut outs are centered on the element and the communications cut out is to the right of the power cut outs

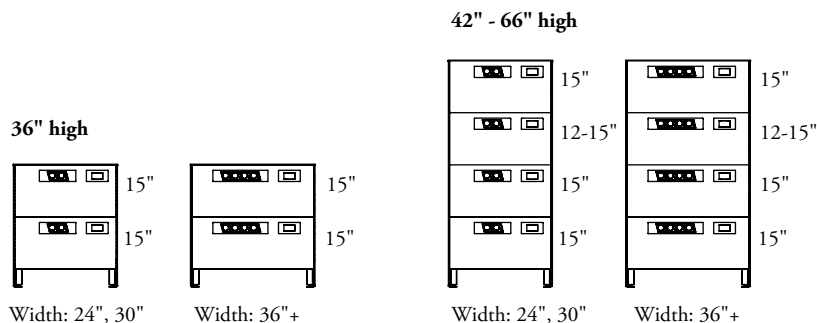
standard (KPET)



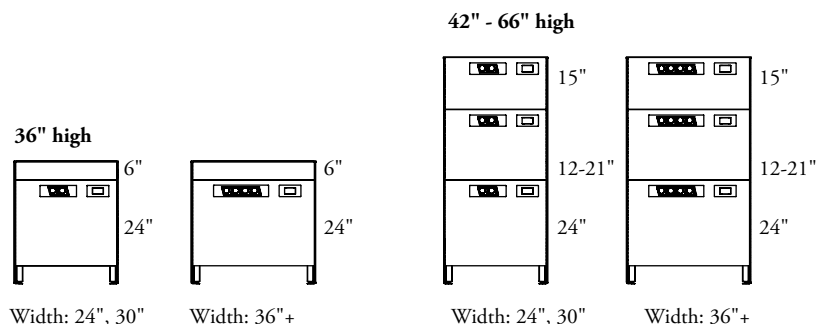
semi-segmented panel (KPES)



segmented panel (KPEC)



segmented panel - 30" rail (KPEL)



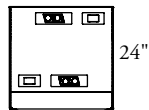
planning with power/communication elements – international floor-flush

The Floor-Flush Panel frame allows outlets to be mounted below all rails including the top rail, and above the bottom rail. The following outlines all location possibilities.

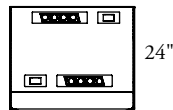
- When the power communication element is mounted with the cut outs at the top of the element the power cut outs are centered and the communications cut out is to the right of the power cut outs
- When the element is rotated to allow the cut outs to be above the base rail, the communications cut out will be to the left of the power cut outs
- Power and communication elements **cannot** extend to the floor, they extend only to the base and a separate baseboard element must be specified, if no cut outs are required on the backside of the panel, the element on the backside can extend to the floor

standard (KPXT)

30" high

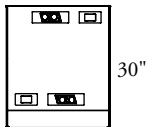


Width: 24", 30"

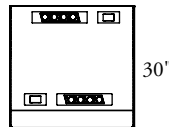


Width: 36"+

36" high

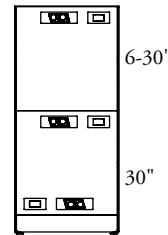


Width: 24", 30"

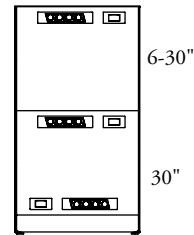


Width: 36"+

42" - 66" high



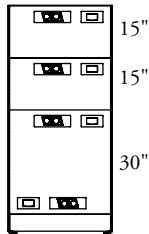
Width: 24", 30"



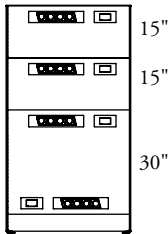
Width: 36"+

semi-segmented panel (KPXS)

66" high



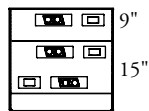
Width: 24", 30"



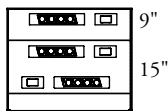
Width: 36"+

segmented panel (KPXC)

30" high

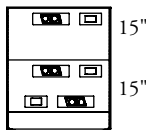


Width: 24", 30"

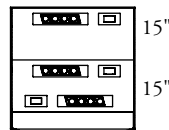


Width: 36"+

36" high

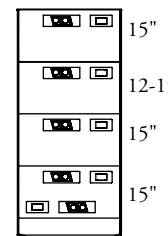


Width: 24", 30"

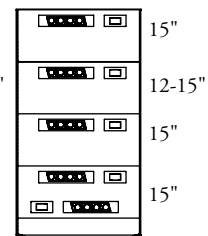


Width: 36"+

42" - 66" high



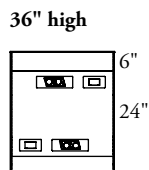
Width: 24", 30"



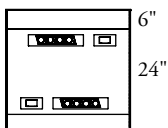
Width: 36"+

segmented panel - 30" rail (KPXL)

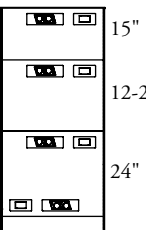
42" - 66" high



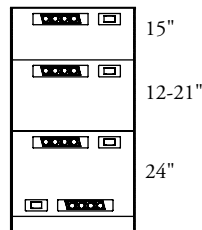
Width: 24", 30"



Width: 36"+



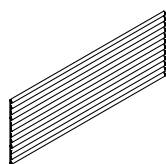
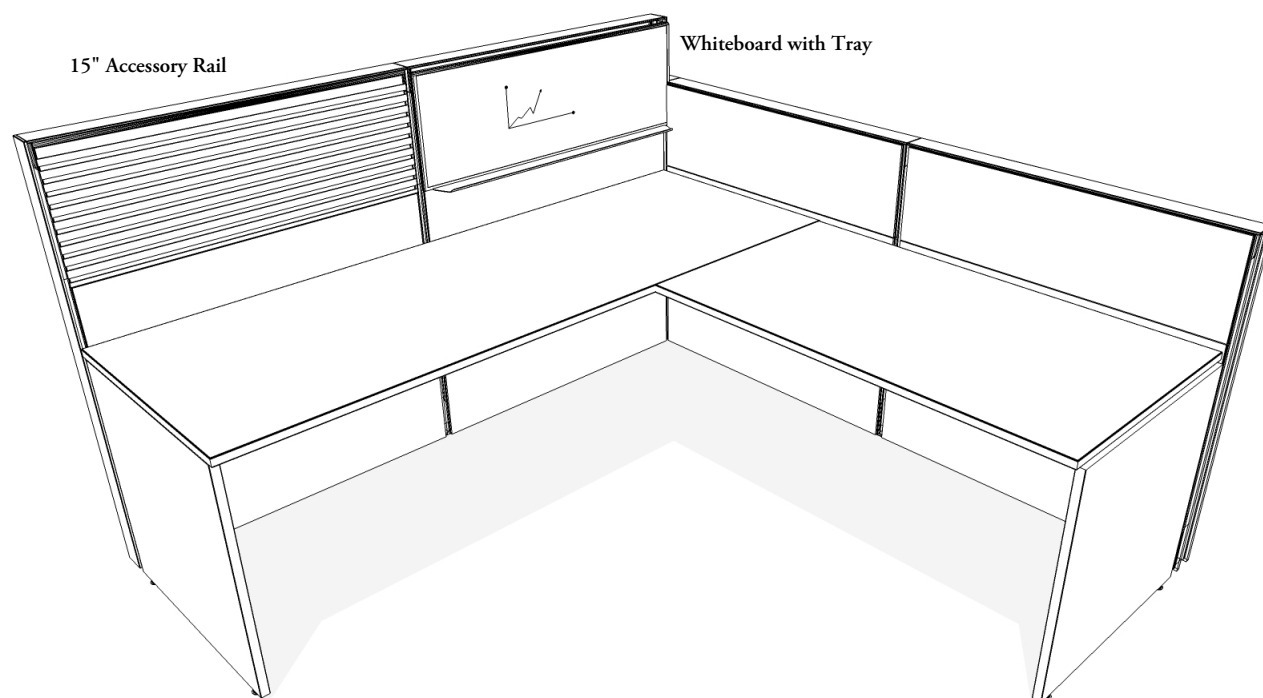
Width: 24", 30"



Width: 36"+

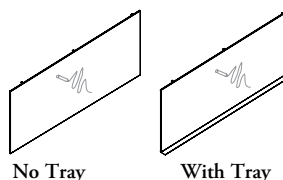
accessory & whiteboard basics

Accessory and Whiteboard elements are available for all panel types and provide functionality to Leverage Panels. They are available in Corridor and Standard width.



Accessory Element (KEL)

- Used on above worksurface levels of panels
- Designed to support Accessory Personal Organizers (PAX and FX) and technology support, available from Complements: *Teknion's Ergonomics & Accessories Program*
- Frame is available in Foundation, Accent and Mica colors
- MAST Monitor Arm is not to be installed on the Accessory Element, see Complements: *Teknion's Ergonomics & Accessories Program*



Whiteboard Element (KEWN)

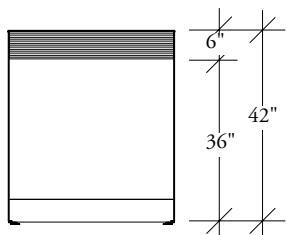
- Used on above worksurface levels of panels
- Serves as an erasable message board
- Available in heights of 12", 15", 21", 24", 30" or 36"
- 24" high element is to be used with the Panel Add-On (KPO)
- A tray can be specified and will be the same width as the element
- Tray finish available in Foundation and Mica finishes

planning with accessory & whiteboard elements

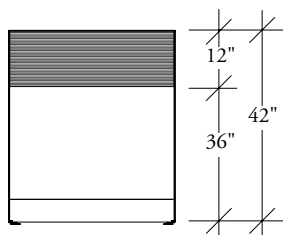
The following should be considered when planning with Whiteboards.

accessory rails

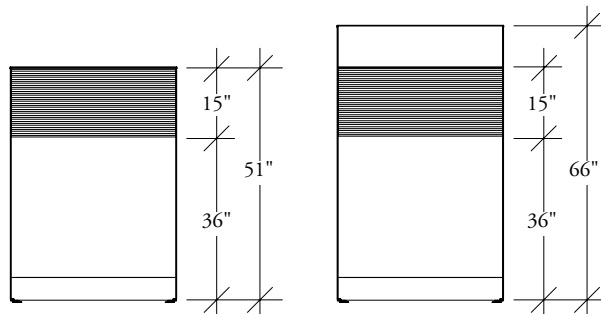
Available in heights of 6", 12" and 15".



The 6" height accessory rail can only be used from 36" to 42" on a 42" high panel.

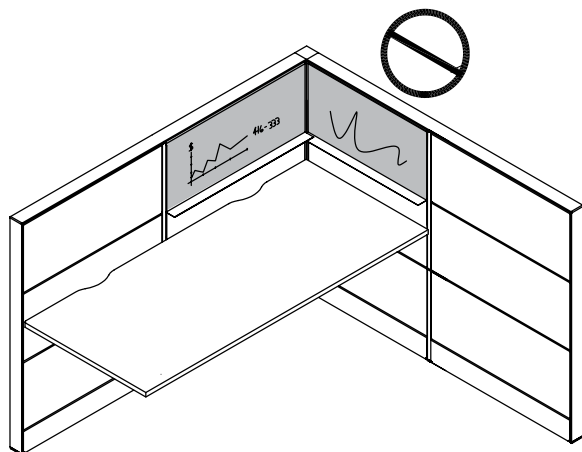


The 12" height from 30" to 42" in a 42" high panel with a 30" datum.

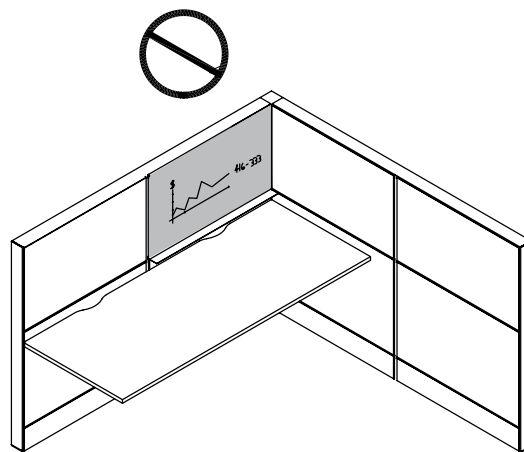


The 15" high in a 51" or 66" high from above the 36" datum line.

whiteboards



- When the tray option is specified, two whiteboards **cannot** be planned side-by-side in a 90° corner configuration as the tray is the full width of the element and will cause an obstruction
- A side-by-side application is possible when no tray is present



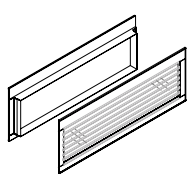
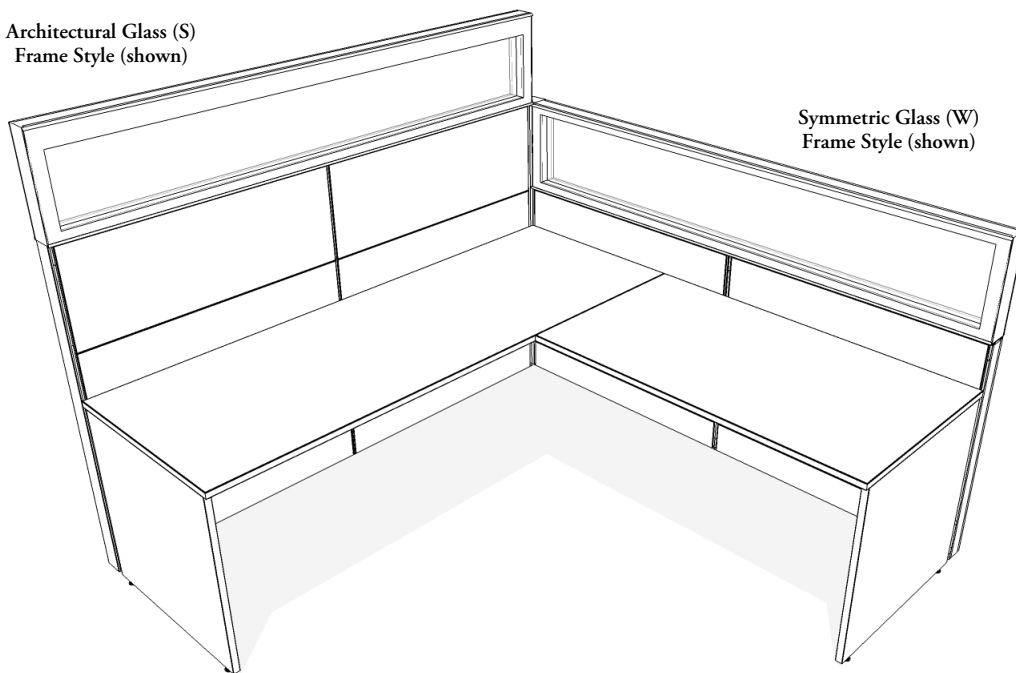
- When planning with the 30" high datum lines, caution must be used when specifying the Whiteboard Element with Tray – the tray may obstruct access to the worksurface scallop

glass element basics

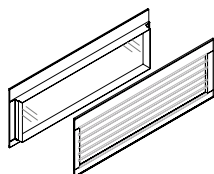
Glass Elements are available for all panel types and provide the opportunity to bring light into a workstation. They are available in Corridor and Standard width with architectural patterns.

Architectural Glass (S)
Frame Style (shown)

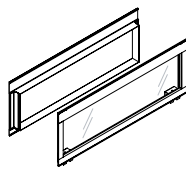
Symmetric Glass (W)
Frame Style (shown)



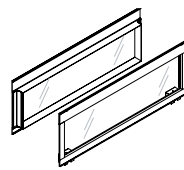
KEG



KEGD



KET



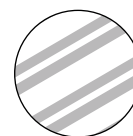
KETD

Architectural Glass Element (KEG), Double Architectural Glass Element (KEGD), Glass Element (KET), Double Glass Element (KETD)

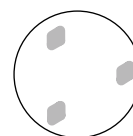
- Available in single or double tempered glass with various levels of visual access
- Symmetric Glass Frame style (W) has a symmetric top and bottom frame and no cable lay in capability. The Glass Frame style (S) has a lay-in cable trough at the top of the element
- Glass (S) can be applied on the top level of the Universal Panel frame style (KPE), allowing for a higher wire capacity at the top of the panel
- Symmetric (W) can be applied on the top level of the Conventional Panel frame style (KPW) Floor-Flush Panel frame style, Elevated panel frame style (KPE) and any other level for all other panel frame styles, providing a larger glass area than the Glass Element frame style (S)
- 24" high Architectural Glass or Symmetric Element can be applied only to 24" high Panel Add-Ons and not in a 24" opening in a panel frame
- Glass Elements are available in Clear or Frost

Architectural Patterns

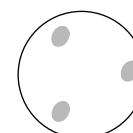
Number of dots or lines used to make up a pattern will vary depending on element height



Louvered







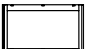
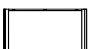


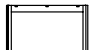

Square Solo



Dot Solo

element/panel add-on compatibility chart

Please use the chart below to determine which Elements can be used with Panel Add-Ons.

Add-On Height		Frame Style	Element Height								
			Acoustic, Laminate, Metal, Wood	Floor-Flush Acoustic, Laminate, Metal, Wood	Baseboards	Power/Communication	Accessory	Glass	Symmetric Glass	Whiteboard	Architectural
12"		F	✓				✓			✓	
		W	✓				✓			✓	
15"		F	✓				✓	✓		✓	✓
		W	✓				✓	✓	✓	✓	✓
21"		F	✓							✓	
		W	✓							✓	
24"		F	✓					✓		✓	✓
		W	✓					✓	✓	✓	✓
30"		F	✓					✓		✓	✓
		W	✓					✓	✓	✓	✓

✓ Applicable